

Technical data

CPU

Intel 386EX embedded processor, 33 MHz

Memory

2 MB Flash (max. 8 MB), 1 MB SRAM battery backup
DOS-compatible Flash disk (drive C: in DOS)

Operating system

PC-compatible BIOS with support for LCD,
optional matrix keyboard and touch screen Datalight
ROM-DOS or another version of DOS (e.g., MS-DOS
6.22 or FreeDOS)
DOS-compatible Flash file system

Interfaces

4 serial interfaces
1 parallel interface (EPP/ECP-capable)
IDE interface for 2.5" hard drive and CF card
(bootable)
PIF bus connector (e.g., to connect Ethernet card)
I²C bus, AT/MF2 keyboard, matrix keyboard up to 8x8
PIF bus ribbon cable connection

Peripherals

Real-time clock with battery backup
Programmable Watchdog
Three 8254-compatible timers

Power management

Operating voltage: 7.5 to 40 VDC (unregulated)
Power consumption at 33 MHz: ca. 8 W

Attributes

Card size 175 x 109 mm
Standard housing, 258 x 162 x 56 mm (IP65 optional)
Can be built into 19" 3HE component rack
320x240-pixel, 5.7" monochrome transmissive LCD
with CCFL backlight

We`re here for you!

Do you have your own ideas about innovative uses for
the Panel-PC?
Would you like to learn how the Panel-PC can expedite
and simplify working processes in your company?
Discuss the many applications possibilities offered
by our flexible industry computer with our creative
development team.

taskit

taskit Rechnertechnik GmbH
www.taskit.de/en

embedded systems

PANEL-PC



*The versatile
industry PC*

taskit

Its robust housing in various configurations and the numerous possibilities for connectivity make the 386EX-LCD Panel-PC a very flexible industry computer.



Panel-PC in sturdy housing

Robust and flexible

The Panel-PC can be put to use in an endless variety of applications, thanks to its DOS compatibility. For effective, space-saving results, integrate the easy-to-use Panel-PC into your computing processes for control of your production systems, medical devices or measurement instruments of all types (industrial scales, multimeters, etc.). Choose a robust industrial housing for extreme conditions that prohibit implementing the usual PC technologies!

DOS compatible

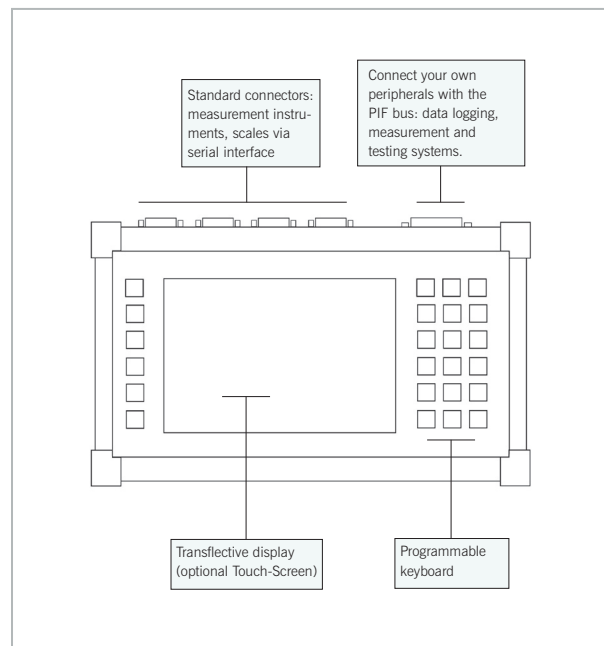
The Panel-PC is DOS compatible, empowering you to work in a proven and familiar development environment. Use the usual compilers (C, Pascal, Basic) to create custom applications for your particular needs – straightforward and economical. You can access the Panel-PC during development or maintenance from a host computer using a terminal program. With just a few lines of Basic, you can quickly and effectively read and manage measurements or automate particular processes.

Extensive connectivity

Four serial interfaces enable you to connect the Panel-PC to a multitude of devices. Additional controllers for IDE, LCD, keyboard (either MF2 or matrix keyboard), etc., as well as a bidirectional LPT interface, are all part of the Panel-PC basic configuration. The complete version makes the interfaces available over the usual standard connectors.

You can easily integrate your own electronic accessories or modules from our PIF card system using the PIF bus on the main board.

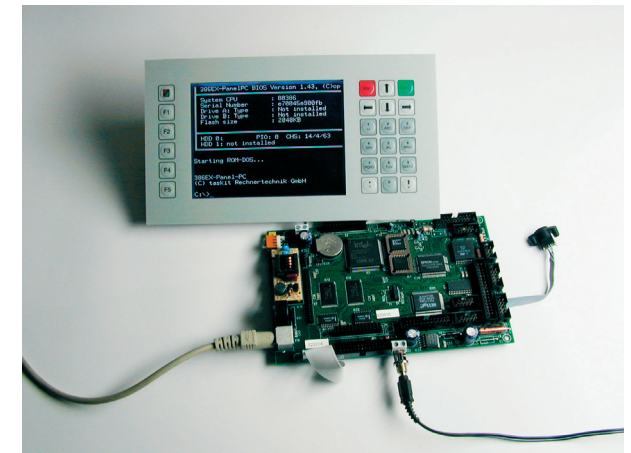
The PIF bus is an easy-to-program 8-bit bus.



Panel-PC connectivity

The Panel-PC: with or without housing

The modular design of the Panel-PC product line makes it suitable for adaptation to the most diverse mechanical conditions. The kit model is ideal for installation in existing or custom-built housings, but is also available as a 19" module. The Panel-PC is furthermore available in a compact aluminum housing or as a finished device in a 19" industrial housing with optional IP65 protection. The powerful CCFL back-lighting ensures that the graphic-capable transfective display is always easy to read. A touch-screen version is available as an additional option.



Versatile installation unit

Long-term outlook

All taskit products are carefully designed to ensure the longest possible product availability. This commitment translates into practice with our almost exclusive use of standard components, such as the Intel 80386EX CPU – the heart of the Panel-PC. You can store data and applications to the integrated Flash memory, to an optional CompactFlash card, or to a 2.5" hard drive.