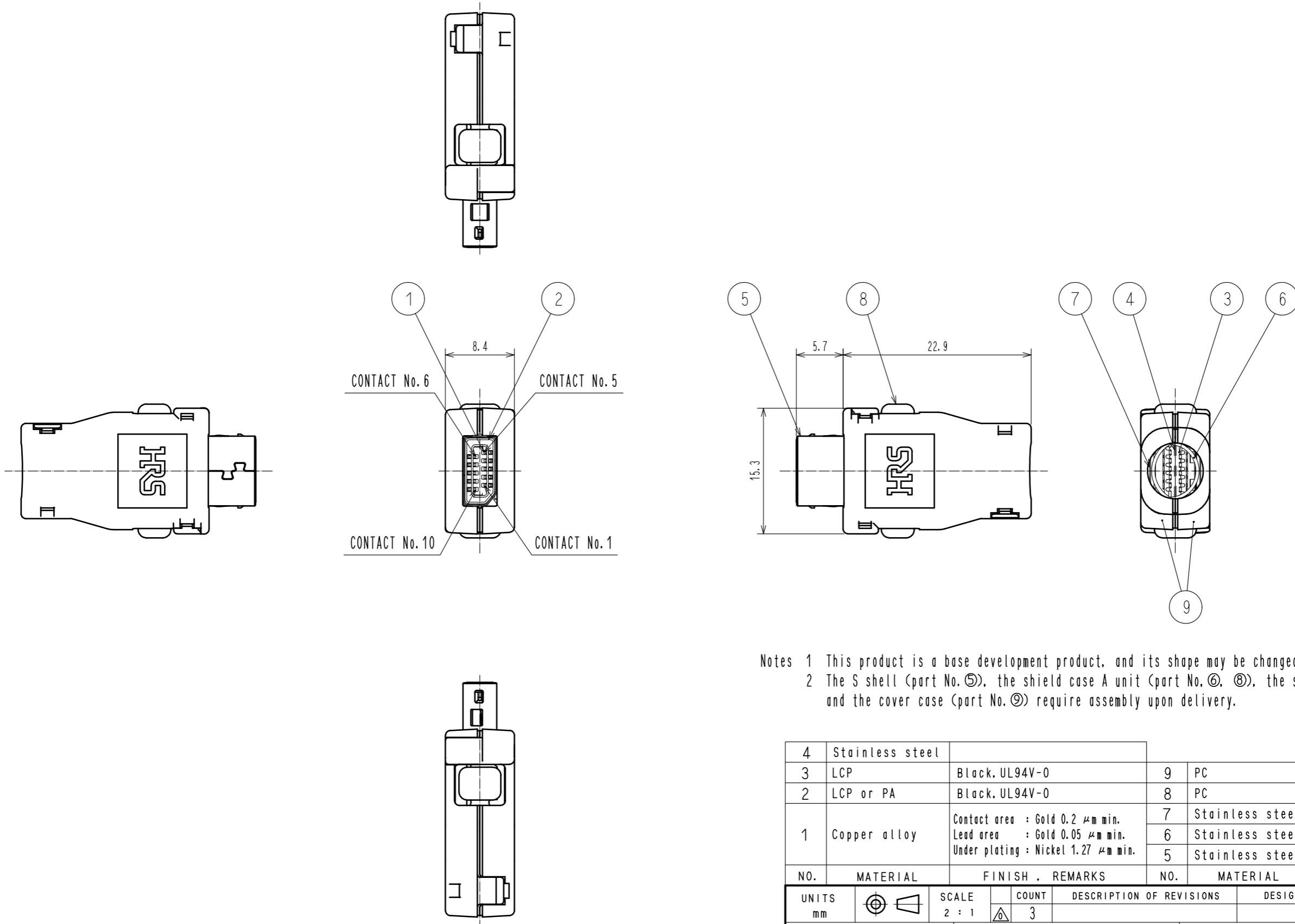


ASSEMBLED CONDITION



Notes 1 This product is a base development product, and its shape may be changed during mass production.
 2 The S shell (part No. ⑤), the shield case A unit (part No. ⑥, ⑧), the shield case B (part No. ⑦) and the cover case (part No. ⑨) require assembly upon delivery.

NO.	MATERIAL	FINISH . REMARKS	NO.	MATERIAL	FINISH . REMARKS
4	Stainless steel		9	PC	Black, UL94V-0
3	LCP	Black, UL94V-0	8	PC	Black, UL94V-0
2	LCP or PA	Black, UL94V-0	7	Stainless steel	Nickel 2 μm min.
1	Copper alloy	Contact area : Gold 0.2 μm min. Lead area : Gold 0.05 μm min. Under plating : Nickel 1.27 μm min.	6	Stainless steel	Nickel 2 μm min.
			5	Stainless steel	Nickel 2 μm min. + Tin 1 μm min.

UNITS	SCALE	COUNT	DESCRIPTION OF REVISIONS	DESIGNED	CHECKED	DATE
mm	2 : 1	3				
APPROVED : RI. TAKAYASU			17.02.01	DRAWING NO. TEDC-301077-00		
CHECKED : KI. NAGANUMA			17.01.31	PART NO. IX40-A-10S-CV(6.4)		
DESIGNED : YS. SAKODA			17.01.31	CODE NO. 251		
DRAWN : YS. SAKODA			17.01.31	1/1		