



## **Teltonika GSM Camera**

### **Quick Start Guide v1.0**

Thank you for purchasing our device! We hope it will satisfy your expectations and you will enjoy its particular features. Please, find few minutes to read the Quick Start Guide before starting the work. It will make the installation and usage of the device easier.

## **i** INTRODUCTION

Teltonika GSM Camera – is a small mobile video monitoring system, that sends data through GSM GPRS/EDGE channel. The design of this device allows to connect camera to the PC through COM port. When Teltonika GSM Camera is connected to the PC, the parameters and received images can be configured. Teltonika GSM Camera supports the following data bearers: GPRS, EDGE and SMS.

## **i** PACKAGE CONTENTS

- 1) Cardboard box.
- 2) "Teltonika GSM Camera" device.
- 3) Power supply
- 4) Connection to PC cable.
- 5) GSM antenna.
- 6) Mounting bracket.
- 7) CD with software and User Manual.
- 8) "Quick Start Guide".

*Note: the manufacturer does not provide SIM card, which is necessary for connecting to the GSM network! SIM card can be obtained from your GSM operator!*

If any of the components are missing, please contact the manufacturer representative or your local distributor.

## **i** HOW TO START?

To start the work:

- Configure camera settings using computer or by SMS messages (read User Manual).
- Fix the mounting bracket and fasten camera on it.
- Connect to the system:
  1. External GSM antenna.
  2. Insert SIM card (with disabled PIN code or enter it with the help of PC).
  3. External sensors.
  4. Power supply, plug it to the power supply source.
  5. Additional external camera if needed.
- Focus camera lens gently using the PC with Camera Configurator software (before focusing the lens make sure, that low sharpness is not the result of enlarged UV ray amount or radio frequency interference).



## **i** Example of camera configuration with SMS messages

- System performs the commands received from authorised phone numbers. While the numbers list is empty, firstly authorize the main user's number. Only the *main user* can enter or change the settings, add or delete additional users who may receive alarm SMS messages and order the filming session. Send SMS message with text "**ADD**" to SIM card placed in the camera and the number from which the message was sent will be the *main user*.
- Access point has to be entered in order to be able to send data through GSM GPRS/EDGE network to the camera. For that matter send SMS message with the text, e.g.: "**APN gprs.internet.net**", where *gprs.internet.net* is the access point of your GSM network provider. If authorization is used in your network, additionally user name (chapuser) and password (chappasword) has to be set. For that matter use SMS command: "**CHAPUSER internet**", "**CHAPPASWORD connect**", where *internet* and *connect* stand for user name and password that were set by your GSM network operator.

One of the easiest ways to receive images from camera, is to receive them into your e-mail box. For this matter you need:


- Activate sending to e-mail mode by sending SMS message with text "**EMAIL ON**" to SIM card inserted in the camera.
- Enter your GSM network e-mail server address and port (if not standard port is used) and send SMS command "**SMTPIP smtp.internet.net**" or "**SMTPIP smtp.internet.net:25**" to camera where *smtp.internet.net* is your GSM network e-mail server address.
- Add your e-mail address to the list by sending SMS command to the camera: "**ADDEMAIL john.smith@mymail.biz**", where *john.smith@mymail.biz* is your e-mail address.

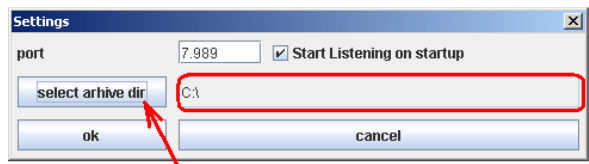
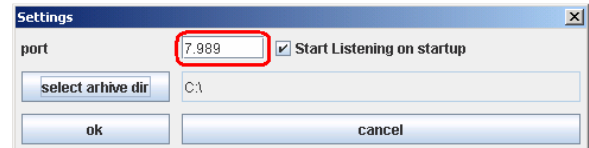
Several commands can be entered in one SMS message (except command "**ADD**") if it does not exceed 160 symbols. Commands must be separated by semicolon, e.g.: "**apn gprs.internet.net; chapuser internet; chappasword connect; email on; smtpip smtp.internet.net:25; addemail john.smith@mymail.biz**".

When camera receives commands, it returns confirmation or error message. When all confirmation messages are received, user can order images. To do so, make a short call (up to 10 seconds) to the camera or send the SMS message with the text "**PHOTO**" and wait until the images will be sent to the e-mail box.

User can also make a phone call to camera and after 10 seconds camera will switch to area listening mode.

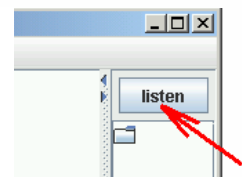
If your PC has a constant external IP address and at least one open port, images from the camera can go directly to the PC. For this you have to:

- Send SMS command to camera "**WEB ON**" to enable sending to server mode (Don't forget to disable other sending points! E.g. e-mail with command "**EMAIL OFF**").
- Send SMS command e.g. "**WEBIP 192.168.0.1:7989**", where *192.168.0.1* is the IP address of your PC and *7989* is a selected port number.
- Run Observation Post software with File -> Settings, set the same port and select the directory for pictures archive. Click  to save the settings. Click "Listen" in the main window to start port listening.



Now make a short call (up to 10 seconds) or send a SMS message with text "**PHOTO**" to camera and receive images into your computer.

If you sent a SMS command e.g. "**VIDEO 3**" to camera, you can set camera to constant video mode for 3 minutes. Images receiving speed will depend upon set picture format (quality). For more details about this and other functions, please, read User Manual.





## INDICATION

On the back of the Teltonika GSM Camera device, there are 3 LEDs: "1", "2" and "Status".  
 "1" and "2" indicates which camera (internal or external) is working.  
 "Status" description is given in the table:

| Status                                  | Description                                       |
|---|---|
| „Status“ LED is on                      | Camera filming input is on and waits for a signal |
| „Status“ LED is off                     | Camera filming input is off                       |
| „Status“ LED blinking                   | Camera is in area listening mode                  |
| „Status“ LED blinking in double signals | Camera is in Camera Configurator mode             |



## IMPORTANT



This sign on the package means that it is necessary to read the User's Manual, which is on the CD, before you start using the device.



This sign on the package means that all used electronic and electric equipment should be stored separately.



## FINAL NOTES

For more detailed information about Teltonika GSM Camera, please read the documentation which is found on the CD. If you encounter any problems using the device and you are not able to solve them yourself, please contact our technical support department by e-mail [support@teltonika.lt](mailto:support@teltonika.lt) We will be glad to help you.